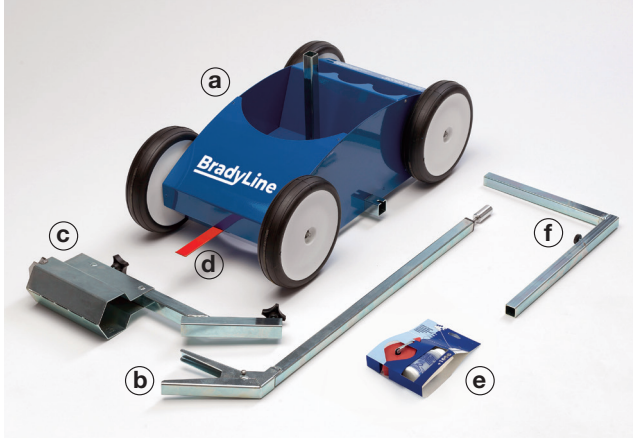


# BradyLine

**Line Marking Applicator** for tarmac and concrete



# Contents



- (a) BradyLine Line Marker
- (b) Top handle
- (c) Lower handle & paint can holder
- (d) Adjustable pointer
- (e) Chalk string & chalk
- (f) Side bracket (sold separately)

## BradyLine Extra Strong Line Marking Paint

### For Tarmac & Concrete



BradyLine Extra Strong Line Marking Paint produces high quality and durable lines and is specially formulated for marking tarmac and concrete areas, such as car parks, industrial floors and areas, warehouses, schoolyards, plus many more.

Spray cans are available in 630ml, with a coverage of approx. 60 to 120 metres, depending on the surface, line width and walking speed.

We recommend 2 coats for the best result and optimum lifespan.



### How far does a spray can go?

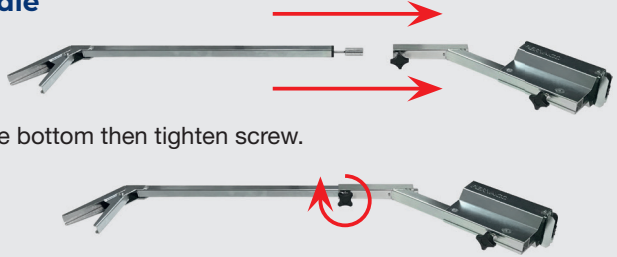
c. 6-11 places	c. 5-9 places	c. 4-7 places

**Note:** How far a can of paint goes depends on the design of the car park as well as the line width, walking speed and absorbent capacity of the surface

# Assembly

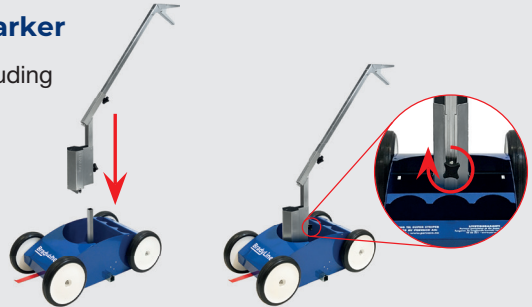
## 1 Assemble the handle

- Insert top handle (b) into lower handle (c).
- Push all the way to the bottom then tighten screw.



## 2 Attach handle to line marker

- Slot handle (c) onto rod protruding from line marker (a).
- Tighten screw.



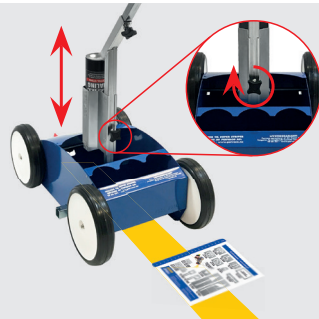
## 3 Insert spray can

- Shake can for 1 minute.
- Remove lid and place can, nozzle first, into can holder (c).



## 4 Adjust line width

- Set desired line width using the indicator on can holder.
- We recommend 80-100mm for outdoor marking and 60-80mm for indoor marking.



# How to use

## 1 Clean the ground surface

- Clean the ground surface from all dust, dirt, oil, grease and soap residue.
- Ensure the substrate is completely dry.



## 2 Plot the line

Use the chalk string and chalk (e) to create temporary lines that you can easily follow with the marking machine.



## 3 Walk at a swift, steady pace

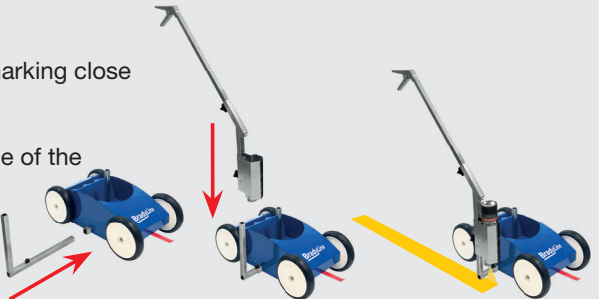
Start marking by squeezing the trigger on the handle, whilst pushing forward at walking speed.

**Tip:** Line strength depends on walking speed and surface absorbency. Avoid walking too slow on smooth surfaces.



## 4 Marking up edges

- Use side bracket (f) for marking close to edges and walls.
- Mount bracket on the side of the machine and move the handle onto the upright.
- Tighten the screw.



# Help with planning

**Tip:** For the sharpest possible start on the line, lay down a piece of cardboard in front of the starting point and begin marking on the cardboard.



## Parking spaces for standard cars

The width of parking lanes for standard cars should be a minimum of 2.4m when vehicles park next to each other. The length of the bay should be 4.8m.

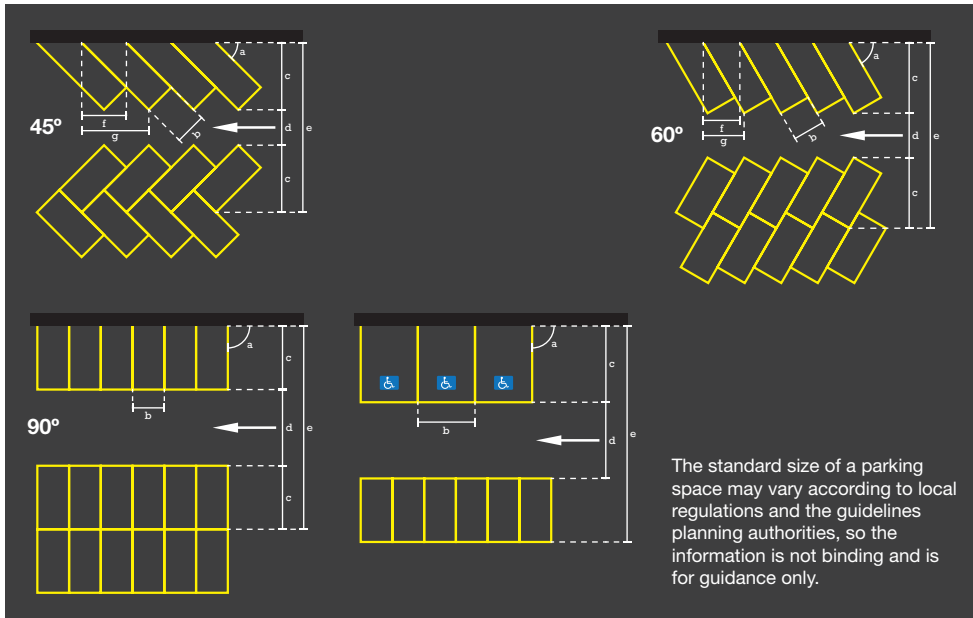
Reduced mobility spaces should be 3.6m in width, where the difference (1.2m) is yellow hatched to enable space for wheelchair access. Spaces must be separated and marked with a disable person symbol.

### Minimum requirements

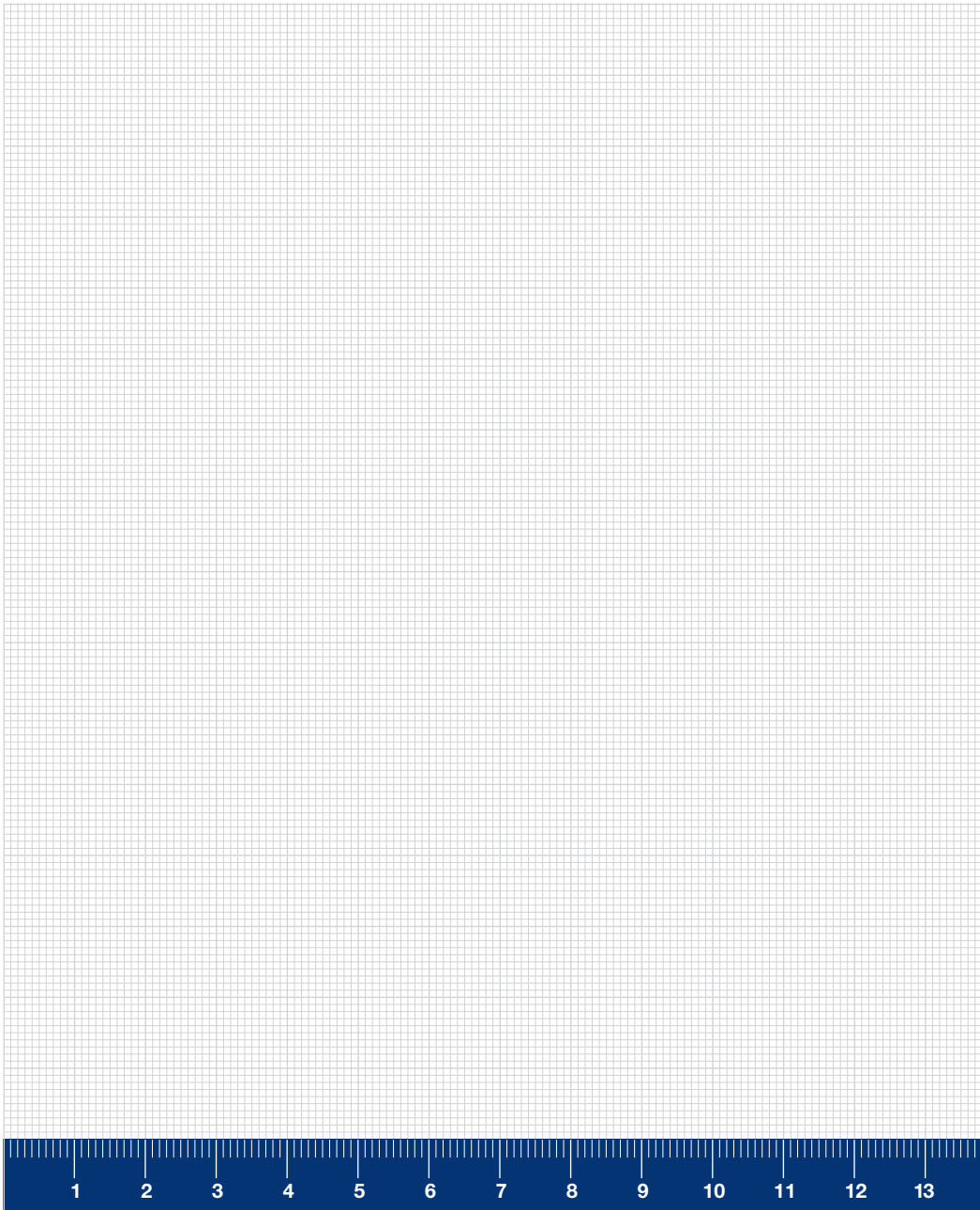
for car parking dimensions:

- 90° parking usually provides the most efficient use of space (lowest gross area per space).
- The minimum aisle width varies in relation to the angle of the parking spaces.

	a	b	c	d	e	f	g
45°	2,5 m	5,3 m	2,8 m	13,4 m	3,5 m	5,3 m	
60°	2,5 m	5,6 m	3,5 m	14,7 m	2,9 m	3,2 m	
90°	2,5 m	5,0 m	6,0 m	16,0 m	-	-	
90° ♿	4,5 m	6,0 m	6,0 m	17,0 m	-	-	



# Graph



# Graph

